

# Waddi Wind Farm

## CONSTRUCTION UPDATE

**Waddi Wind Farm will deliver 108 MW of renewable energy, enough to power 68,000 homes. Construction of the project is now underway, bringing employment and broader benefits to the region.**

Since mobilising on-site in February, our team has made significant progress preparing the site for major works later this year.

As works ramp up, you can expect to receive fortnightly updates about progress on-site and important information about any local impacts.

Our construction workforce is now working on a rotating roster between 7am and 7pm, Monday to Sunday.

### Construction highlights

- 100% of benches (flattened areas as pictured on the right) complete
- 7 of 18 foundations excavated
- 50-75 workers on-site daily
- 30-40 vehicles on-site daily

### Mullering Road upgrade works

As part of our works, we are sealing the road surface on a section of Mullering Road between the Brand Highway and an area east of the project site.

The works are now expected to start in September 2026 and we will provide further updates closer to the start date.

### Sign up to SMS updates

You can opt-in by scanning the QR code or visiting the project webpage to complete the online form. Alternatively, email or call us and we'll sign you up.



Figure 1: Completion of bench where the substation will be located.

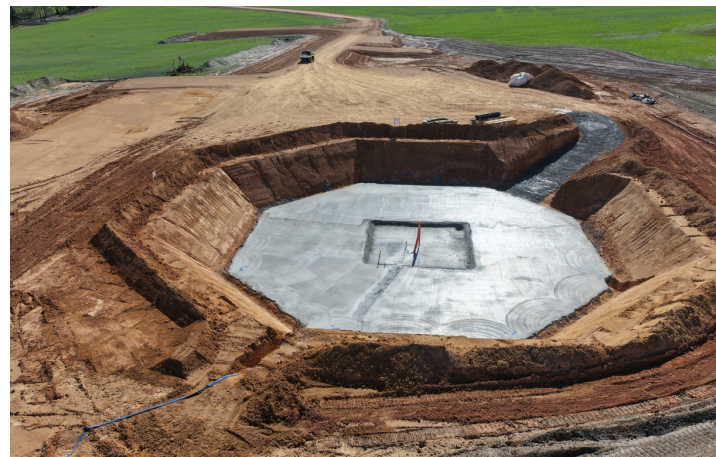


Figure 2: Works on one of the turbine foundations.

### Contact us

For any questions or feedback please contact the project team via 1800 WE TILT (938 458) or [WaddiWindFarm@tiltrenewables.com](mailto:WaddiWindFarm@tiltrenewables.com)