

# Palmer

## WIND FARM

### Tilting towards the future.

The Palmer Wind Farm will help reduce Australia's carbon footprint by generating up to 288MW of clean energy when constructed. That's enough to power up to 142,000 South Australian homes.

The local community will see new jobs, investment and \$7+ million in community benefit funding.

The project is located between Palmer and Tungkillo, approximately 70 kilometers from Adelaide on Peramangk Country.

Palmer Wind Farm is preparing for construction in mid-2026.

#### This newsletter includes information on the following:

- Project update and construction details
- Monthly drop in sessions
- Community Consultative Committee
- Benefit Sharing

### PROJECT SNAPSHOT

- # Number of turbines: 40
- ✈ Blade tip height: up to 220 metres
- ⚡ Maximum capacity: 288 MW
- ✓ Emissions reduced: 212,000 tonnes per year
- 👷 Jobs created:  
200+ in construction, 5 ongoing

#### Sign up to receive project updates:

Opt-in by hovering over the QR code or jump on the Project webpage and complete the linked form. Alternatively, send us an email or call us and we'll add you to the list.



## Project update

**Tilt Renewables and our construction partners BMD, Vestas and ElectraNet are preparing to start construction mid-2026.**

### The current key activities include:

- Detailed design of tracks, site entry points and crossing points;
- Completing our secondary consents such as the Bushfire Management Plan and Traffic Management Plan;
- Selecting subcontractors to support BMD;
- Pre-mobilisation activities including on-site surveys and technical investigations to support the design.

### As we get closer to construction, we will provide more regular communications including:

- Monthly pre-construction updates;
- Fortnightly construction updates (once construction starts);
- Quarterly newsletters (just like this one).

A key area we are working on right now is finalising our traffic management strategy. There may need to be some traffic management in place near the site entrances on Randell Road for safety reasons. We will provide more information when the plans are finalised.

### The project will also use SMS notifications to notify the local community when:

- Blasting activities might be heard near you;
- Oversize and Overmass vehicle deliveries start;
- There are unexpected changes or impacts through construction.

To subscribe for SMS notifications, please click hover over the QR code or find the form on our website [www.palmerwindfarm.com.au](http://www.palmerwindfarm.com.au)



## Construction details

It will take approximately two years to build the Palmer Wind Farm.

### What can you expect to hear and see?

#### Working hours

Monday to Saturday, 7am to 7pm.

- Any works occurring outside these hours is considered 'out of hours' works. Examples of when 'out of hours' work could be needed are activities that can't be stopped until they are finished (e.g., concrete pours, turbine lifts).

#### Construction activities

- You may hear concrete batching, excavation, rock breaking, blasting, construction vehicles moving and machinery on site;
- We will take practical steps throughout construction to minimise noise and dust impacts;
- Noisy activities will be located away from sensitive areas where possible.

#### Traffic

Increased traffic will start in mid-2026 before Over Size and Over Mass (OSOM) deliveries of turbine parts commence in 2027.

- Deliveries will use state highways and enter site from entry points on Randell Road;
- Vehicles will move around site via the access roads we build. There will only be a limited number of other vehicles using local roads where needed;
- We will actively manage driver behaviour to ensure the safety of the local community. All project drivers will be required to comply with speed limits, road rules and approved traffic management plans;
- Large deliveries of turbine parts (OSOM) will be planned to avoid peak hours of 8-9am on weekdays.

## Upcoming and ongoing engagement opportunities

### Monthly drop in sessions

We'll be holding monthly community drop-in sessions and warmly welcome anyone to come along for a chat.

This is an informal opportunity to:

- Ask questions about the project;
- Share any thoughts or concerns;
- Have a conversation with the project team;
- Simply drop in and say hello.

**Location:** Tungkillo Hall

**When:** Monthly on a Wednesday

**Starting:** Wednesday 13 May, 3:00pm – 6:00pm

No presentations, no formal agenda—just a chance to connect.

Feel free to drop in at any time during the session—we look forward to meeting you.

### Community Consultative Committee (CCC)

Tilt Renewables is establishing a Community Consultative Committee (CCC) for the Palmer Wind Farm for the construction period 2026-2028.

The committee will bring together community representatives, Tilt Renewables, BMD Group (construction partner) and an independent chair to support open, two-way communication throughout the construction period.

***The CCC is designed to support open discussion and feedback to help inform the project. While it doesn't make decisions, it plays an important role in sharing community information and perspectives so we can manage construction impacts as best as possible.***

This is a great opportunity to represent your community and help ensure local perspectives are heard, and that everyone in the community can:

- Stay informed about the project;
- Ask questions and raise any concerns;
- Share local knowledge and insights;
- Provide feedback directly to the project team.

#### Who we're looking for

We're seeking a mix of community members to reflect diverse perspectives and experiences, including those who:

- Live in the local and surrounding areas;
- Are neighbours to the wind farm site;
- Travel through the area for work, school or daily activities;
- Are connected to local schools, community groups or services.

#### Express your interest in joining the CCC

If you are interested in joining the CCC, please express your interest via our Expression of Interest Form at <https://forms.office.com/r/nQrfKyAi4t> or via the QR code, before 9am Tuesday 26 May 2026.



Following expressions of interest, Tilt Renewables and the independent chair will select the CCC in late May 2026. All selected members will be notified in early June before the first CCC meeting in mid-June.

All CCC members will need to agree to the CCC Terms of Reference which is available via the Expression of Interest form and [www.tiltrenewables.com/palmer-wind-farm-construction/](http://www.tiltrenewables.com/palmer-wind-farm-construction/)

# Benefit Sharing

Tilt Renewables is committed to being a positive community member and are proud to provide support that makes a real difference.

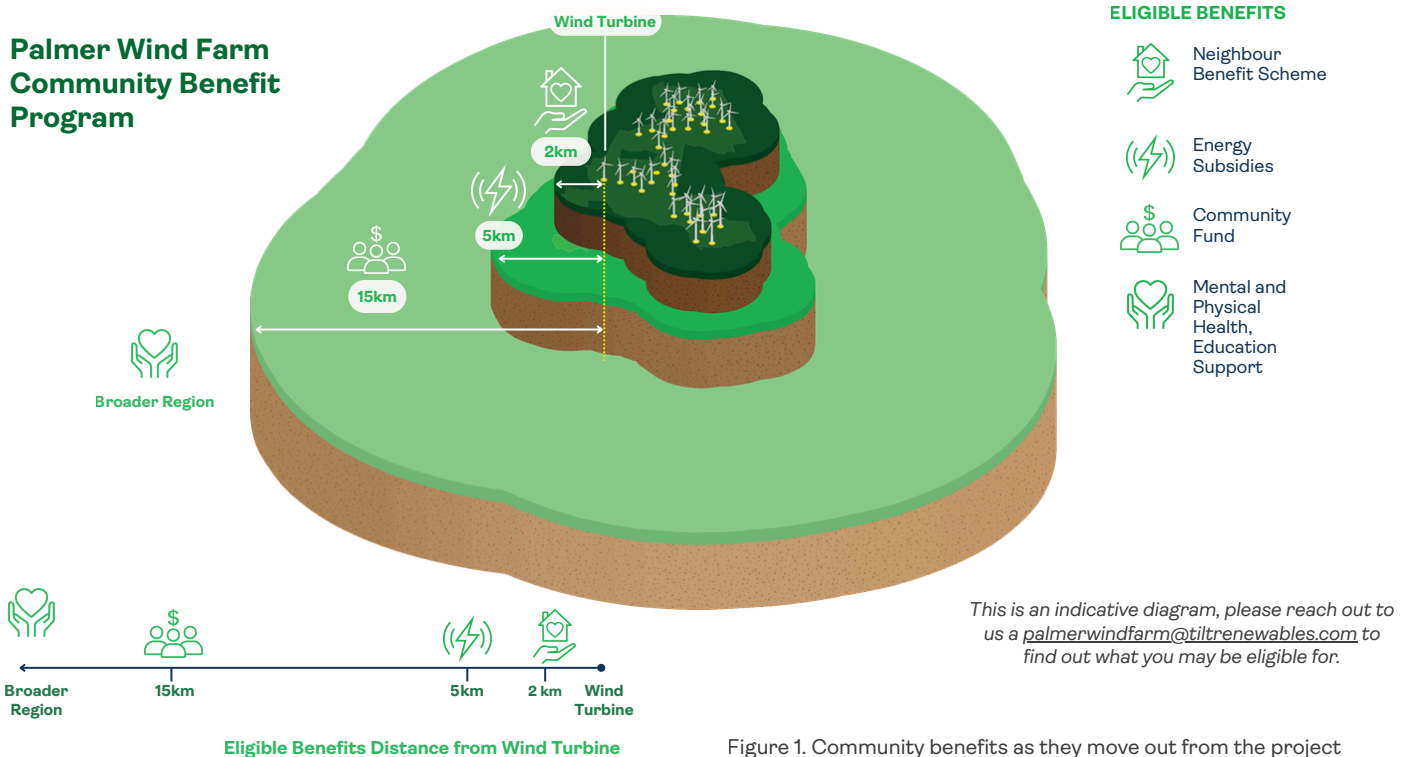
The Palmer Wind Farm will distribute more than \$7 million in community benefits across the 30+ year life of the project. This amounts to \$230,000 every year, which will be adjusted by CPI. This plan was developed through consultation with the community, including surveys mailed out to all residences within 5km of the project and two workshops with community representatives, CFS, councillors and members of parliament.

## What is the plan?

The \$230,000 will be split between community grants, energy subsidies, education support and mental and physical wellbeing programs every year. The plan has been designed so that **the closer you live to the wind farm, the more benefits you could receive.**

The components of the benefit sharing plan and how they will be rolled out is explained on the following page. Everything in this plan is subject to evaluation and adjustment over the life of the project. If you would like more details and to understand how the plan was created, you can find the full Palmer Wind Farm Benefit Sharing Plan on the project websites community page.

### Palmer Wind Farm Community Benefit Program



### Within 2km – Neighbour Benefit Scheme

In 2013 a Voluntary Neighbour Benefit Scheme was established for the Palmer Wind Farm.

Neighbours with a dwelling within 2 km or a property boundary within 1km of a turbine, will be eligible for an annual payment of \$3,500, plus an extra \$100 for every extra turbine. **This money is in addition to the Benefit Sharing Plan outlined above.**

People will continue to be eligible to sign up for the scheme until the wind farm is in operations. Please reach out to the team via the contact details below if you believe you may be eligible for the Neighbour Benefit Scheme.

### Within 5km – Energy subsidies

When Palmer Wind Farm begins generating electricity, \$150 energy subsidies will be available for all residents living within 5km of a turbine every year. This is approximately 300 households and includes the Palmer and Tungkillo townships.

### The broader region – Education support

Tilt Renewables will be establishing a scholarship through the Bendigo Bank Community Enterprise Foundation to support adult learners pursuing further skills.

\$10,000 will be available each year to support people aged 21 or above, living in the broader region surrounding Palmer and Tungkillo who have been offered a place at an Australian university, College, TAFE Institute or apprenticeship.

The scholarship aims to support expenses which will enable the recipient to complete their studies. This could include travel, accommodation, childcare or course costs.

The Palmer Wind Farm Adult Learning Scholarship will be open for applications in August 2026. Applicants are welcome from across the region, but people closer to Palmer and Tungkillo will be prioritised.

### Within 20km – Community Fund

The Palmer Wind Farm will have a community fund of \$70,000 during construction.

The aim of the Palmer Wind Farm Community Fund is to support small, charitable and not-for-profit organisations that offer broad, long-term benefit to the community, within 20km of the project.

The Palmer Wind Farm Community Fund will open for applications in August 2026.

### The broader region – Community Bus

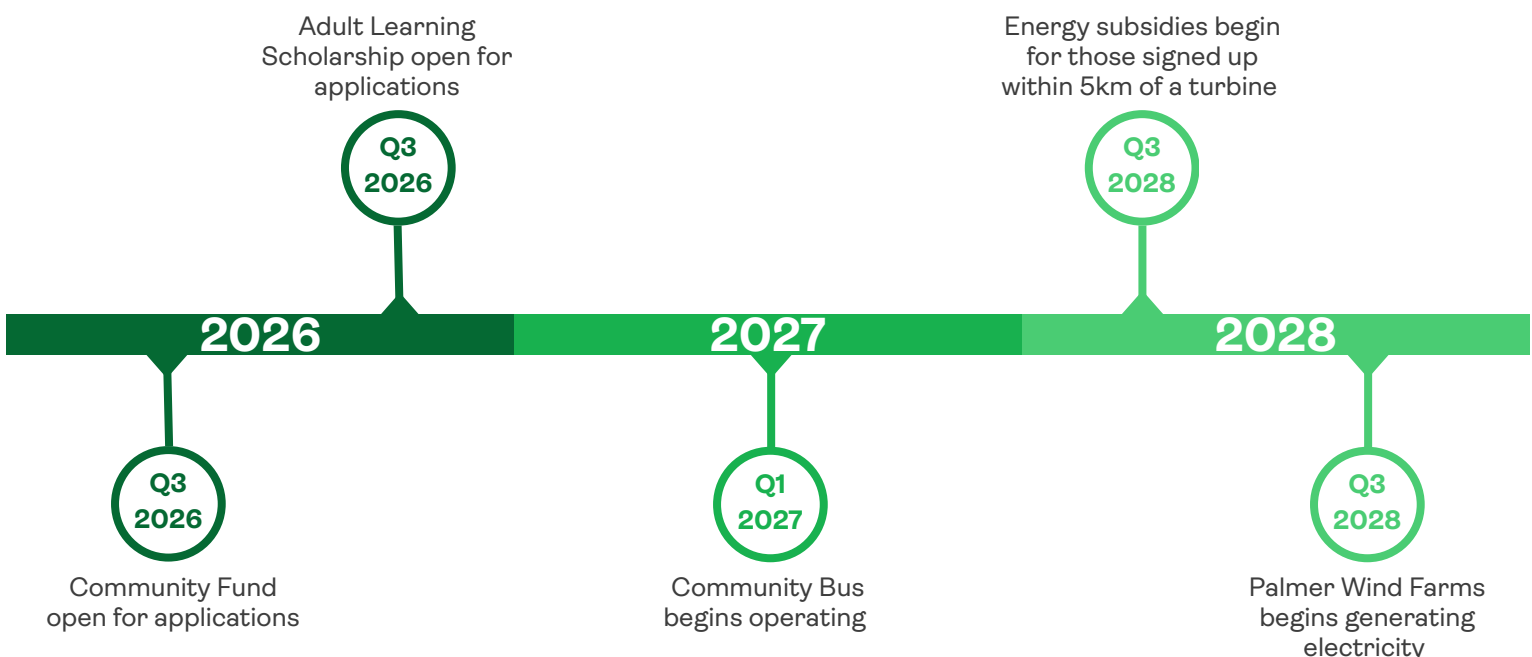
Tilt Renewables is working with LinkSA to establish a community bus in the Mid-Murray region. LinkSA has suggested two bus routes to us:

- Mount Pleasant to Murray Bride via Tungkillo, Palmer and Mannum
- Palmer to Tea Tree Plaza via Tungkillo, Mount Pleasant, Birdwood and Gumeracha

Tilt Renewables is currently suggesting to run both services one day a week and evaluate the use of the services after a year.

We are looking to begin the bus services in 2027.

## Indicative Benefit Sharing Timeline



## Questions?

If you have any questions about the Palmer Wind Farm, get in touch by calling: 1800 WE TILT (938 458)  
Email: [palmerwindfarm@tiltrenewables.com](mailto:palmerwindfarm@tiltrenewables.com) | Web: [www.tiltrenewables.com](http://www.tiltrenewables.com)  
Postal Address: PO Box 16080 Collins St West ,  
Melbourne Vic 8007

## Goods and Services Register

To register interest in providing goods or services for the Palmer Wind Farm project, please head to [www.tilt.au/goodsandservices](http://www.tilt.au/goodsandservices) or hover over the QR code and complete the form

