

Rye Park Wind Farm

Project Overview and Proposed Modification

Fact Sheet
September
2020

Project overview

The approved Rye Park Wind Farm (the Project) constitutes an approximate \$700 million investment and is located to the west of Rye Park, to the north-west of Yass and south-east of Boorowa, in New South Wales. Positioned on a long ridgeline running north-south at right angles to the prevailing wind direction, it spans the Hilltops, Upper Lachlan and Yass Valley local government areas and provides a reliable source of wind.

A Modification Application has been prepared and submitted to request the modification to the Project Development Consent State Significant Development (SSD) 6693 (Development Consent) under section 4.55(2) of the *Environment Planning and Assessment Act 1979* (EP&A Act).

Development Consent was granted, by the NSW Planning Assessment Commission (PAC, now known as the Independent Planning Commission), on 22 May 2017, for the construction, operation and decommissioning of up to 92 wind turbines with a maximum tip height of 157 metres and associated infrastructure.

In the years since the original Development Consent were determined, there have been significant advances in wind turbine technology. The application to modify the Development Consent (Modification Application) has been pursued in order to take advantage of these technology changes and to provide greater certainty with regards to the constructability of the Project.

The Rye Park Wind Farm is proposed to be developed by Tilt Renewables – an owner, operator and developer

in Australia and New Zealand. We bring decades of experience developing, building and managing renewables assets and are strongly committed to the communities where we operate.

Benefits

Jobs and local benefits:

- Around 250 jobs during construction
- Around 10 jobs during long-term operations (30 years)
- Supporting local businesses and creating jobs by buying local goods and services
- Upgrades to some local roads
- Creation of additional fire breaks and improved access roads for fire fighting

Regional Economic Benefits:

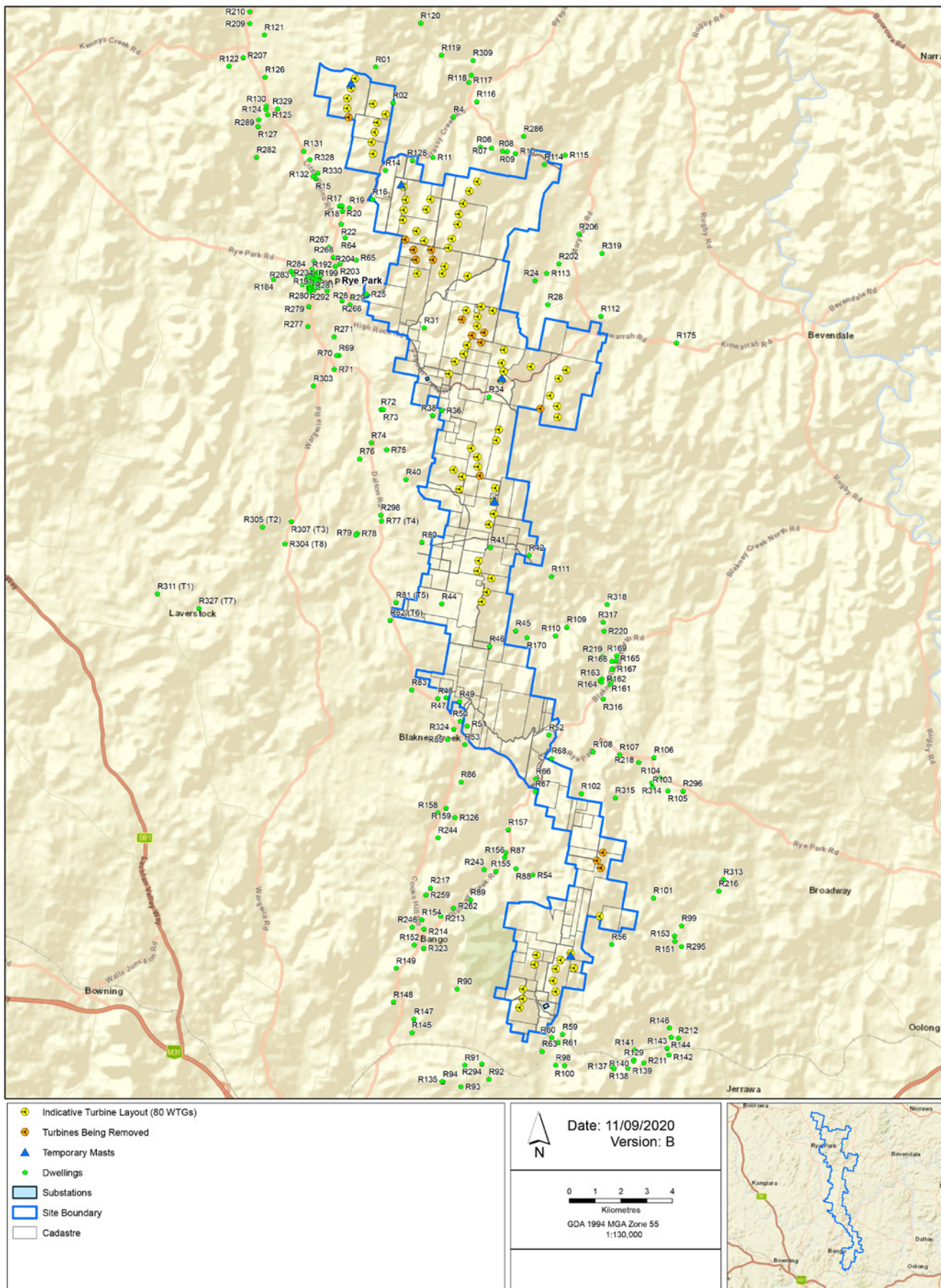
- \$230,000 per year in community funding
- Around \$3 million in direct payments to local landowners
- Significant local and regional economic benefits
- Drought-proof and post-retirement income stream for farmers

Environment

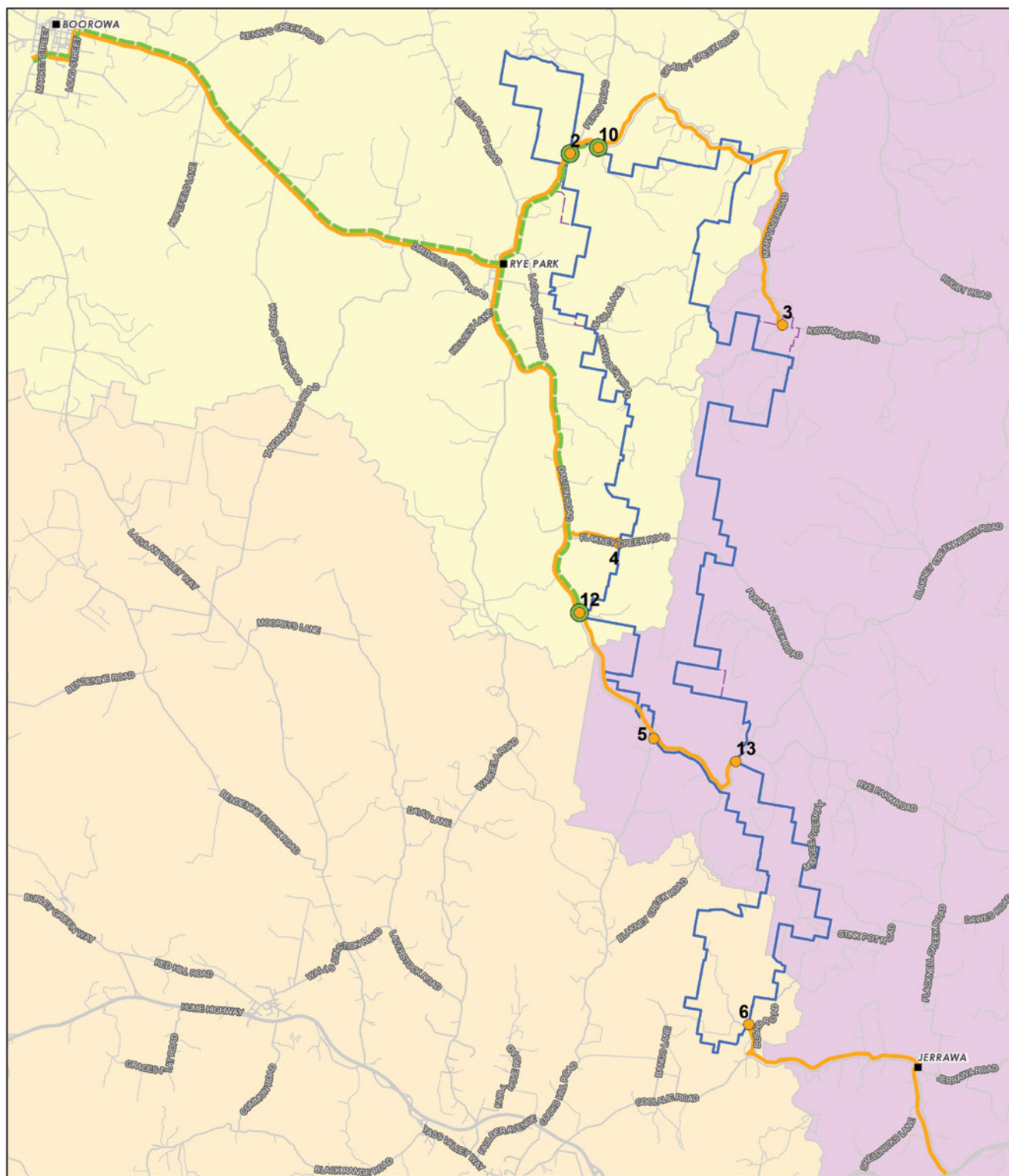
- Clean and renewable source of energy
- An increase in 26% of energy capacity for the Final Modified Project will generate enough electricity to power 220,000 average Australian homes, approximately 50,000 more homes than the Approved Project, resulting in more clean energy for Australian homes and businesses.
- Offset more than one million tonnes of carbon emissions per annum – equivalent to removing 330,000 cars from the roads each year.
- Construction carbon emissions offset within first year of operation
- Zero carbon emissions during operation of the wind farm
- Increased knowledge of local plant and animal species through surveys, monitoring and protection

PROPOSED PROJECT AREA AND SITE LAYOUT

This plan shows the proposed project area and turbine locations, including the 15 turbines proposed to be removed.



PREFERRED TRANSPORT ROUTE



- Approved Site Access Points
- Preferred Site Access Points
- Towns
- Approved Transport Routes
- - - Preferred Transport Route
- Project Boundary
- Approved Project Boundary

- Local Government Area**
- YASS VALLEY COUNCIL
 - UPPER LACHLAN SHIRE COUNCIL
 - HILLTOPS COUNCIL

Date: 31/03/2020
Version: A

0 1 2 3 4 5
Kilometres

GDA 1994 MGA Zone 55
1:140,000



Clarifications to the Modified Project include:

Refinement of the Project infrastructure including:

- Removal of an additional three wind turbines within close proximity of Rye Park village;
- Adjustment of 2.3 km of Transmission Line (up to 330kV);
- Clarification of the approved, permanent meteorological masts (met masts) so as to allow for the Development Corridor;
- Refinement of the Development Corridor – External Roads;
- Additional ground disturbance for pole locations and associated track to enable the Project to connect to the TransGrid Transmission Line; and
- Inclusion of an additional temporary construction compound to facilitate upgrades on the TransGrid owned existing 330kV Transmission Line at the southern section of the Project site.

All clarifications to the Modified Project have been further detailed in the Amendments Report.

A revised Biodiversity Development Assessment Report (Revised BDAR) and Aboriginal Cultural Heritage Assessment (Addendum to the ACHA) have been undertaken to assess the refinement to the Project infrastructure. The assessments found that the proposed refinements will not substantially change the level of impacts associated with the Modified Project. The Amendments Report confirms that these clarifications will further reduce the overall impacts of the Proposed Modification.

Please refer to the Amendments Report including the updated summary table, via the NSW Major Projects website: www.planningportal.nsw.gov.au/major-projects/project/26241



Project approvals and proposed modifications

We are proposing the following modifications to the approved Rye Park Wind Farm Development Consent to increase project benefits and address design challenges.

What modifications are being proposed?

The Proposed Modifications being sought in the Modification Application include:



Removal of 15 wind turbines to reduce the Project to a maximum of 77 wind turbines

Increase to the wind turbine envelope to a maximum tip height of 200m to enable the use of newer and more efficient wind turbine models



Revisions to the Development Corridor to accommodate revised Indicative Development Footprints including the reduced wind turbine numbers, optimised design assumptions including changes to the wind turbine foundations and hardstands, internal access tracks, collector substations, transmission line and connection infrastructure, and supporting infrastructure. Optimisation of other infrastructure, including operation and maintenance facilities, construction compounds, and temporary concrete batch plants



Selection of the Preferred Transport Route for heavy and over-dimensional vehicles to enable the consideration of ground disturbance and associated vegetation removal which will be required to accommodate the proposed upgrades of the local Council roads. Several options for the transportation of heavy and over-dimensional vehicles from port facilities are under consideration

Project component	Approved Project	Modified Project	Final Modified Project	Change from the Modified Project to the Final Modified Project	Change from the Approved Project to the Final Modified Project
Number of wind turbines	92	80	77	Decrease by 3	Decrease by 15
Height of turbines (max tip height)	157m	200m	200m	No change	Increase by 43m
Operations and maintenance buildings	2	1	1	No change	Decrease by 1
Collection substations	3	1	1	No change	Decrease by 2
Connection substations	1	1	1	No change	No change
Preferred Transport Route (Local)	Multiple Options	A Preferred Option	A Preferred Option	No change	Selection of A Preferred Option
Concrete Batch Plants	2	3	3	No change	Increase by 1
Construction Compounds	3	2	3	Increase by 1	No change
Development Corridor (Wind Farm & Permanent Met Masks)	1,646 ha	1,272 ha	1,327.57 ha	Increase by 55.57 ha	Decrease by 318.43 ha

Why is the Modification Required?

Modifications to the Development Consent are required to enable the Project to utilise improvements in wind energy technology to enable significantly more renewable energy production to be achieved with fewer, larger wind turbines and to reflect the outcomes of the ongoing design optimisation and assessment carried out as the Project progresses towards construction.

The justification for the Proposed Modifications and the associated benefits can be summarized as follows:



By using the more efficient turbine models the Project has the potential to generate more renewable electricity from the same project footprint, ultimately resulting in a lower cost of energy from the Project with clear benefits to the end user and energy consumer.



The Project is strongly aligned with the NSW Government energy and Commonwealth climate policies. The Project will provide 100% emissions free, renewable energy and help NSW with its inevitable transition away from its current reliance on fossil fuels which are continuing to contribute to climate change impacts.



Greater efficiency; optimised cabling and transmission line infrastructure minimising electrical losses and maximising the generation capacity of the Project. Subsequent benefits as a result of this include:

- Reduction of transmission losses;
- Minimisation of resource use and waste generation;
- Reduced project cost and timelines; and
- Reduced haulage requirements.



The Project will provide full time employment for up to 250 staff during construction and up to 10 ongoing regional jobs during its operational life providing increased employment opportunities.



The Project will result in a direct injection of approximately \$2-\$3 million per annum to the local community through payments to landholders, permanent staff, the Community Enhancement Fund and a benefit sharing plan, with contributions providing better diversification of income and a drought proof and post retirement income for farmers.



An increase in 26% of energy capacity for the Final Modified Project will generate enough electricity to power 220,000 average Australian homes, approximately 50,000 more homes than the Approved Project, resulting in more clean energy for Australian homes and businesses.



Producing more clean energy means more carbon emissions savings:

- Approximately 1,314 GWh in generation per annum is enough to power around 220,000 homes per year;
- Offset more than one million tonnes of carbon emissions per annum – equivalent to removing 330,000 cars from the roads each year; and
- Offset construction and manufacturing carbon emissions well within the first year of operation.



The Project will make a significant contribution to the shortfall in generation that will arise with the forecast retirement of Liddell Power Station in the near future and other coal-fired generators over the coming years.

Modification assessment process:

Modification application submitted 23 April 2020

NSW Department of Planning, Industry and Environment **public exhibition** period to run 13 May – 3 June 2020 (21 days)

If required a **Response to Submissions** (RTS) report will be prepared to address issues raised during the public exhibition period

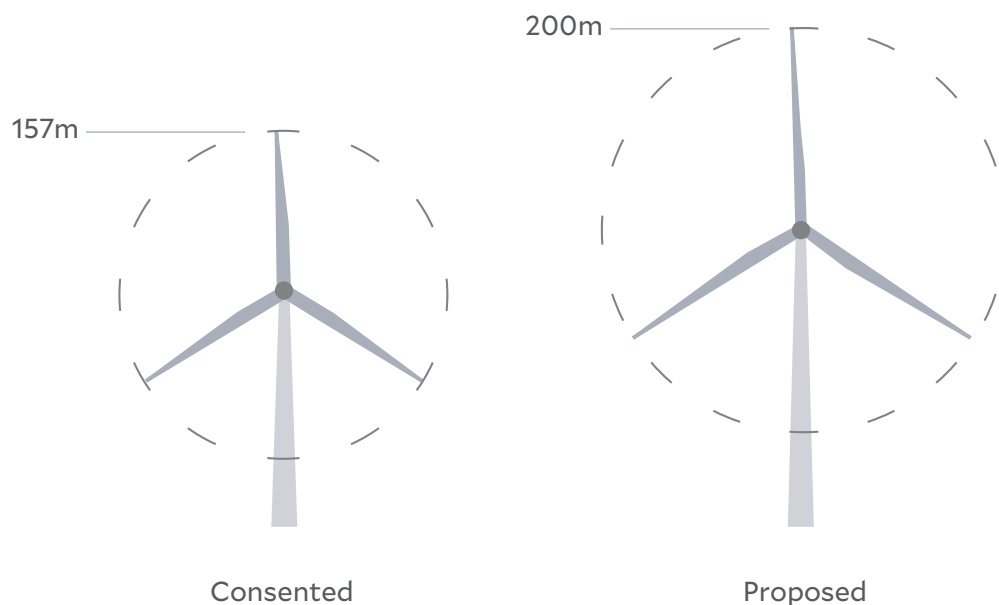
Following public exhibition and the RTS phase, the Project may be referred to the **Independent Planning Commission** (IPC)

Following assessment a **decision** will be made on the Modification Application. ←

Turbine Tip Height:

New wind turbines that are more technologically advanced and efficient are proposed to be used at the Rye Park Wind Farm.

The change in tip height is in line with more recently approved wind farms, such as Bango Wind Farm, which has approval for a tip height of 200 metres. This will involve reducing the number of turbines from 92 to 77 and increasing the maximum tip height from 157 metres to 200 metres.



Environmental Assessments:

A detailed assessment of the key impacts of the Proposed Modifications has been undertaken by technical specialists and included as part of the Modification Application.

The assessments focused on the potential change in impacts compared with the Approved Project. The assessments have also taken into consideration the relevant environmental issues identified in the Original Environmental Impact Statement (EIS) and RTS.

The following table summarises changes to impacts, mitigation strategies and Development Consent conditions:

Specialist assessment type	Change in impact	Changes to mitigation strategies	Changes to Development Consent	Modification Application report - Appendix references
Visual Impact	Not considered to result in a magnitude of visual change that would significantly increase visual effects (and former visual impact ratings) associated with the Approved Project.	No	No	G.1
Shadow Flicker and Blade Glint	No increased shadow flicker impacts on non-associated residences and no impact of blade glint.	No	No	G.2
Noise	With the implementation of the curtailment strategy, noise level from the Modified Project is predicted to achieve the noise criteria at all nearby residences, consistent with the Approved Project.	Yes. Implementation of a curtailment strategy	Yes. See Section 2.2.1 of the Amendment Report	G.3
Biodiversity (Vegetation)	No increased impact on <i>White Box Yellow Box Blakely's Red Gum Woodland EEC</i> under the BC Act. Impacts on Box Gum Woodland reduced by 12.7 ha.	No	Yes. See Section 2.2.2 of the Amendment Report	G.4
Biodiversity (Bird and Bat)	Increased risk to blade strike to species that regularly occur above 30m AGL. No increased impact or adverse impacts to species listed under the BC Act.	No	No	G.5
Aboriginal Heritage	Increased number of Aboriginal Heritage Items identified, however with the implementation of mitigation measures, the Modified Project would result in a similar to moderately increased level of harm in comparison to the Approved Project.	No	Yes. See Section 4.0 for the description of the Proposed Modifications and impact assessment in Section 7.7	G.6
Historic (European) Heritage	No impact on historic heritage listings of Commonwealth, National, or NSW State Significance however additional areas of archaeological potential identified. Overall, impact on Historic Heritage is slightly higher compared to the Approved Project.	Yes. A 20m buffer to be applied to areas of archaeological potential. Further mitigation to be outlined in a Heritage Management Plan.	No	G.6
Traffic and Transport	A 0.1% reduction in heavy vehicle construction traffic, however impacts would not be significant if appropriate mitigation is applied. Two additional over-dimensional routes from the Port of Newcastle identified.	No	Yes. Section 4.0 for the description of the Proposed Modifications and impact assessment in Section 7.9	G.7
Electromagnetic Interference	Potential for interference with point-to-area style communications such as mobile phone signals, radio broadcasting, and terrestrial television broadcasting. A range of options are available to rectify difficulties. Increased potential for cumulative impacts on mobile phone, radio, and television signals.	No	No	G.8
Aviation	No infringement of any OLS, PANS OPS surfaces or the Grid LSALTS. Little to no impact upon local flying activities and unlikely to affect ATC surveillance systems. The modified project will infringe the LSALT protection surfaces for four air routes, however this is consistent with the Approved Project.	No	No	G.9

Questions:

We understand that the Modification Application, Response to Submissions Report and Amendments Report could be a bit overwhelming to navigate due to their length and scale of technical information. We've therefore prepared a digital platform, informryeparkwf.com to facilitate an accessible exploration of the detailed information included in the Modification Application. The platform includes summaries of the Modification Application (including environmental assessments), interactive maps and FAQs.



Benefit Sharing

We are committed to sharing the benefits of the Rye Park Wind Farm with the local community and invite you to share your ideas on how we could contribute to meaningful projects that have positive and lasting benefits for many.

On other projects we have provided sponsorships, education programs, training and employment schemes – but all communities are different, so we don't take a one-size-fits-all approach.

Please use the Benefit Sharing page on the Inform Rye Park website below to provide your input on the kinds of additional benefit sharing programs you'd like to see delivered for the Rye Park community.

www.informryeparkwf.com/benefit-sharing



Community Enhancement Fund

Tilt Renewables has an agreement with local councils to provide \$2500 per constructed turbine per year to a community fund. The proposed modification will reduce the number of turbines at Rye Park Wind Farm, but we don't want this to reduce financial support for the community – so we are committing to providing community funding for 92 turbines.

Funding for any unbuilt turbines could be added to the council administered community fund or directed toward other local initiatives. We will consult with the community on their preferred approach.



Neighbour agreements

We are currently offering voluntary Neighbour Agreements to some landowners whose property neighbours the wind farm. These agreements provide an opportunity for landowners close to the wind farm to share in the financial benefits of the development.

The agreements are in addition to our other benefit sharing initiatives and are part of our commitment to contribute positively to the broader community.

The neighbour agreements do not prevent people from making a submission on the project, nor do they remove the need for us to comply with conditions of the development consent for the wind farm.



Modifications to the Development Consent are required to enable significantly more renewable energy production to be achieved with fewer, larger wind turbines.

Subscribe to receive the newsletter by email

Let us know if you'd like the Rye Park Wind Farm newsletter emailed to you, by contacting: ryeparkwindfarm@tilt Renewables.com



Sign up to the **goods and services** register

To register interest in providing goods or services for the Project, please visit the Rye Park project webpage (www.ryeparkwf.com.au) and complete the linked form under the Employment section.

Questions?

If you have any questions, get in touch by calling: **1800 WE TILT (938 458)**

Email: ryeparkwindfarm@tilt Renewables.com | **Web:** www.ryeparkwf.com.au

Postal Address: PO Box 16080 Collins St West , Melbourne Vic 8007

