

# COOPERS GAP WIND FARM

CCC MEETING

THURSDAY 8 MAY



# CONTENTS

1. BUSINESS ARISING FROM MINUTES
2. PROJECT UPDATE
3. STAKEHOLDER & COMMUNITY ENGAGEMENT
4. OTHER BUSINESS

# BUSINESS ARISING FROM MINUTES

## APOLOGIES

- Owen Boushel, Manager Stakeholder Engagement
- Elizabeth Beavis, Asset Manager

## PREVIOUS CCC ACTIONS

- Noise monitoring – update
- Community Enhancement Fund – Wambo Wind Farm collaborations
- Niagara Road viewing area – update from Ros
- Telstra Tower – update
- Newsletter distribution
- Jarrail Road – investigation into past commitments



# PROJECT UPDATE



## ON SITE ACTIVITY

- Niagara Rd Culverts - temporary props are installed and inspected regularly, currently negotiating a permanent upgrade with SBRC
- Noise monitoring
  - Commenced in April, will continue to the end of the month
  - Report expected 8 to 12 weeks following conclusion of testing

## PERFORMANCE OF WIND FARM

- Performance has improved, currently 116-118 turbines online with a lot of major repairs completed
- Occasionally the turbines stop due to negative prices in the electricity market, but this has reduced due to the season (high demand in summer) and increased batteries connected to the grid



# STAKEHOLDER & COMMUNITY ENGAGEMENT



## COMMUNICATIONS AND ACTIVITIES

- Newsletter – end of year
- Tilt at the local shows – Bell, Dalby, and Roma

## COMMUNITY FUND UPDATE

- \$100,000 available for the 2025 Community Enhancement Fund

## COMPLAINTS AND ENQUIRIES

- Email [complaints@tiltrenewables.com](mailto:complaints@tiltrenewables.com)
- Call 1800 WE TILT (938 458)
- View our Complaints Management Procedure on the [Tilt Renewables website](#).
- Three open complaints

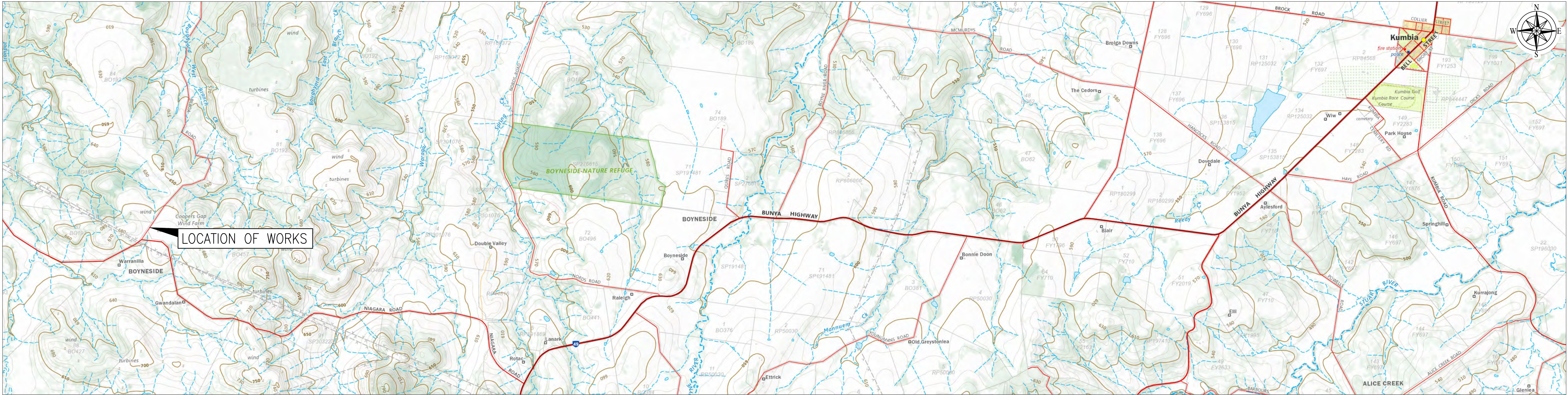


# DISCUSSION

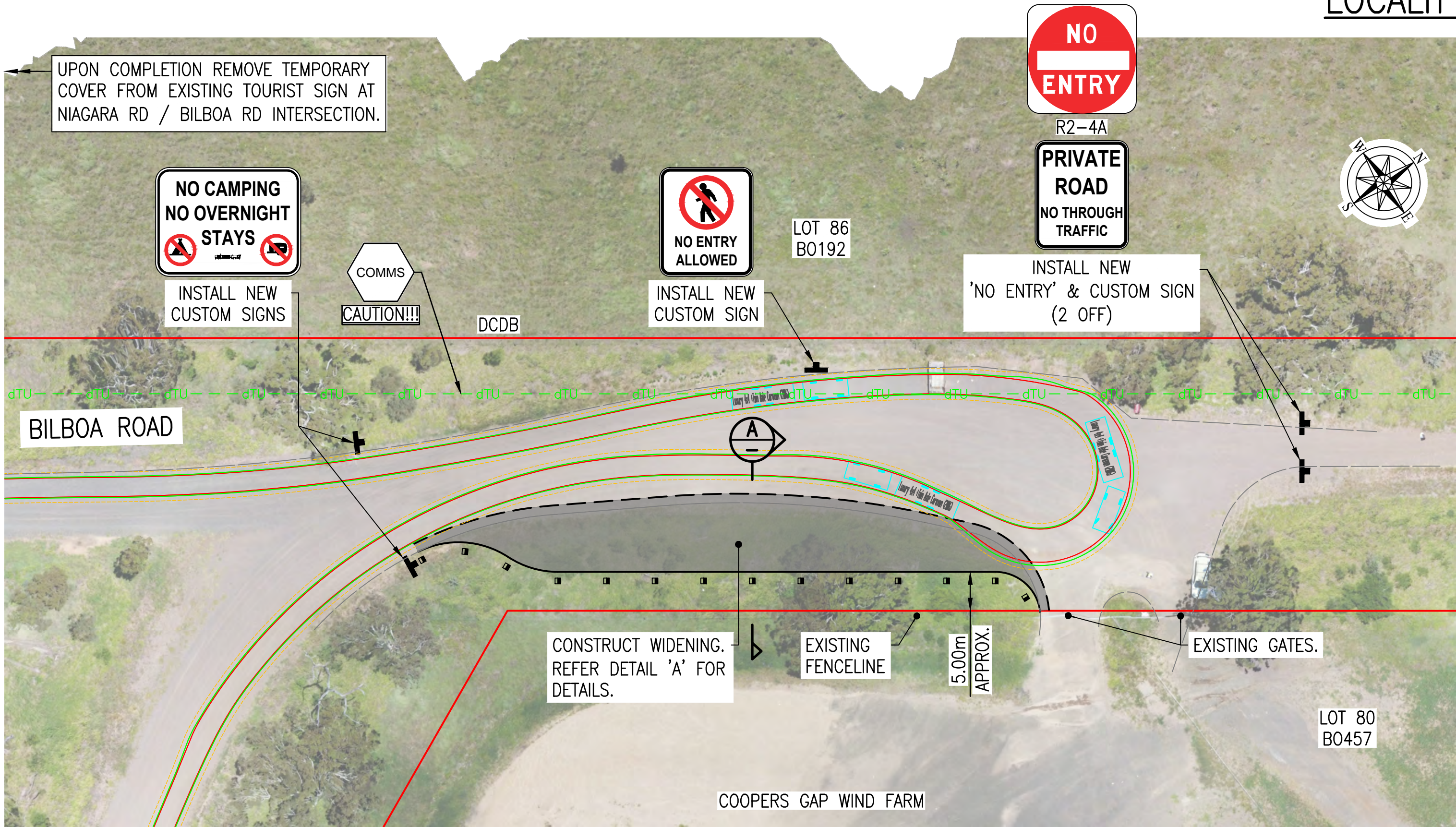


# BILBOA ROAD, BOYNESIDE

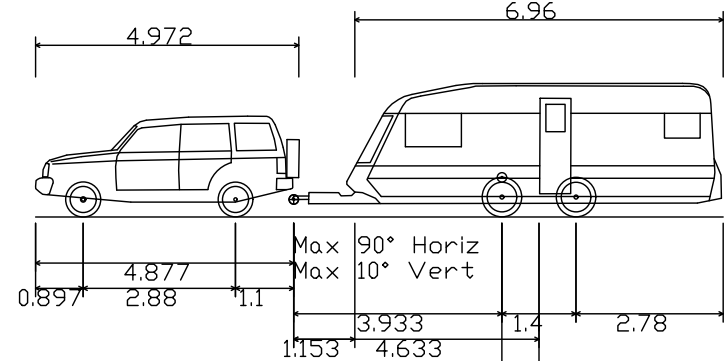
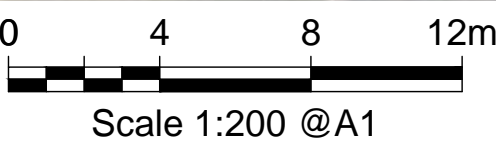
## ROAD WIDENING



LOCALITY PLAN



GENERAL ARRANGEMENT



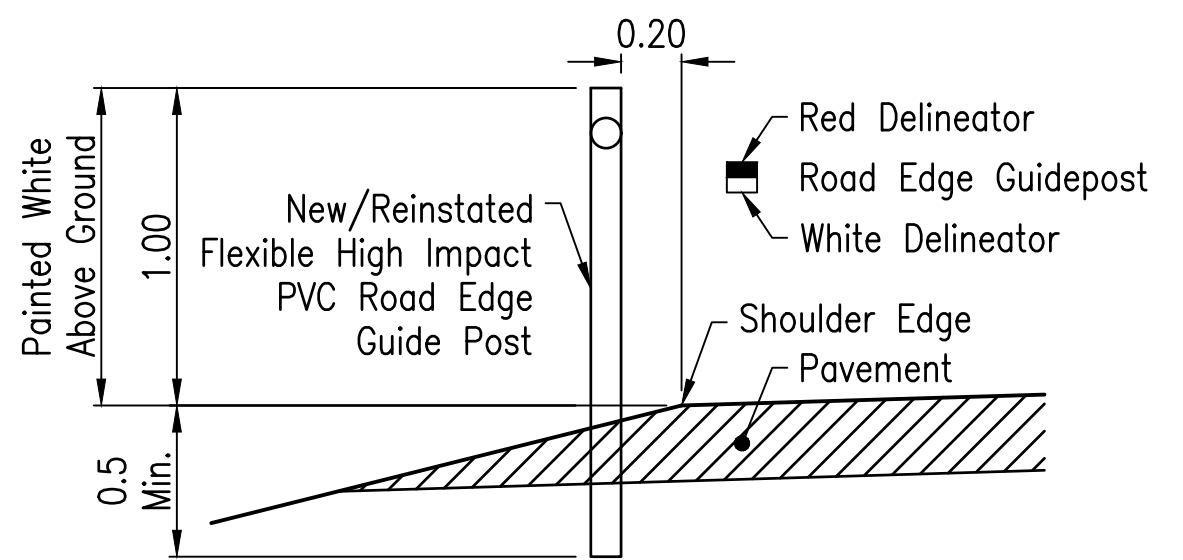
Luxury 4x4 + Twin Axle Caravan (2006)  
Overall Length 12.990m  
Overall Width 2.86m  
Overall Body Height 2.54m  
Min Body Ground Clearance 0.251m  
Max Track Width 2.130m  
Lock-to-lock time 4.00s  
Curb to Curb Turning Radius 5.800m

### LEGEND

Φ ENSURE NEW CONSTRUCTION IS FREE DRAINING

### EXISTING PUP NOTES:

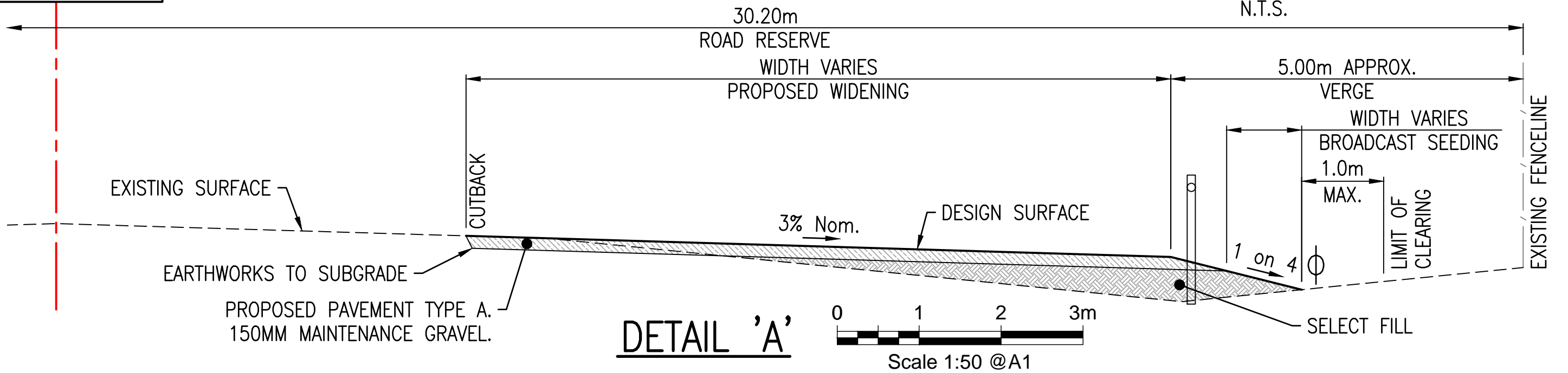
THE LOCATIONS OF UTILITIES HAVE BEEN APPROXIMATED FROM INFORMATION SUPPLIED BY THE UTILITY AUTHORITIES. DETAILS OF UTILITY SERVICES ARE PROVIDED FOR INFORMATION ONLY, AND NO RESPONSIBILITY IS TAKEN FOR THE ACCURACY OR COMPLETENESS OF THE INFORMATION SUPPLIED.



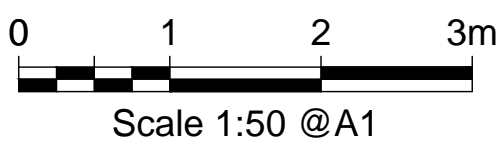
### REGP NOTES

- This detail shows the Flexible High Impact PVC Road Edge Guide Posts (REGP) location in relation to the shoulder point only. For additional information, refer Std. Drg. No. 1356 and Manual of Uniform Traffic Control Devices.
- Longitudinal spacing along the road shall be in accordance with Manual of Uniform Traffic Control Devices (MUTCD) Part 2.
- Where changes in formation width occur, guideposts are to be installed in accordance to Figure 4.17 of the Manual of Uniform Traffic Control Devices (MUTCD) Part 2.

### ROAD EDGE GUIDEPOST DETAIL



DETAIL 'A'



Survey Data			
	Datum	ARBIT	
	Horiz. Grid	ARBIT	
	Height Origin	AHD	
0	ISSUED FOR CONSTRUCTION	03.02.25	
A	80% DESIGN	15.01.25	
Revisions/Descriptions		Approval	Date
		Books	CRC Drone

**SOUTH BURNETT REGIONAL COUNCIL**  
BILBOA ROAD, BOYNESIDE  
ROAD WIDENING



Drawn MH	Designed MH	Checked GA	Verified GJ	Revision Date	File Number 520-01	Project Number 007286	Project Funding W4Q
Approved					Sheet GENERAL ARRANGEMENT		
Principal Engineer (Design) G. Jackson RPEQ# 12825 Date					Plan Number 00326-01	Sheet No. 1 of 1	Revision 0