

# Rye Park

A green logo consisting of three stylized, curved lines that resemble wind or a leaf.

## WIND FARM

### Welcome to the December newsletter for Rye Park Wind Farm.

**The Rye Park Wind Farm is helping reduce Australia's carbon footprint while bringing local investment and employment to the region.**

The site continues to deliver clean, renewable energy to the grid while supporting local communities and maintaining strong environmental compliance. Over the past year, our turbines have operated reliably, contributing to Australia's transition to a sustainable energy future.

This year Rye Park Wind Farm has generated 1,190GWh which is enough to power over 210,000 average NSW homes. This is enough to offset over 780,000 tonnes of CO<sub>2</sub> and equivalent to taking 330,000 cars off the road!

### What's happening on site?

Key activities this year included annual servicing and bushfire preparedness activities, ongoing condition monitoring and maintenance, biodiversity monitoring including golden sun moth survey, and independent environmental audits.

We also received the Noise Monitoring Report following the conclusion of acoustic compliance testing in January. The report demonstrates that Rye Park Wind Farm is compliant with all relevant noise criteria. The report is available on the [Rye Park Wind Farm project page](#) on our website.

### Sign up & stay informed



Scan the QR code to receive the Rye Park Wind Farm Newsletter to your inbox.

If you don't have email but would still like to receive the newsletter, please call us on 1800 938 458.

### Benefit sharing

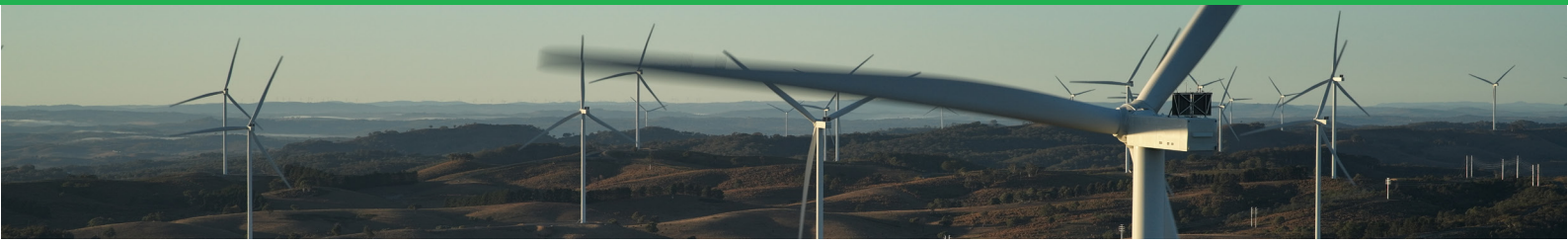
The Rye Park Wind Farm Community Enhancement Funds, run in partnership with local councils, have completed nearly all of their funding rounds for 2024 and 2025.

There's one more round of funding to come for the Upper Lachlan Shire Council Rye Park Community Fund - so keep an eye out for your chance to apply before the end of this financial year!

Through these funds, councils have spent over \$420,000 on local projects, broken down as follows:

- [Hilltops Council](#) - \$327,442 in 2024/25 and 2025/26 funding rounds
- [Yass Valley Council](#) - combined \$55,413.29 from 2024/25 and 2025/26
- [Upper Lachlan Shire Council](#) - \$40,000 in 2024/26 and \$40,601 to come in 2025/26.

Some of the approved projects include funding an outdoor learning space at Yass Montessori Preschool and a purpose-built dual cab ute for the Rye Park Rural Fire Service. For more information on each fund and recipients please visit each council website.



## Rye Park Wind Farm - Official Opening

In May, we proudly celebrated the official opening of Rye Park Wind Farm with NSW Minister for Energy Penny Sharpe.

Minister Sharpe spoke about the importance of projects like Rye Park in helping New South Wales meet its renewable energy targets. The day was a fantastic opportunity to bring together local stakeholders, community members, and project partners to mark this milestone and reaffirm our shared commitment to a cleaner energy future.

*See right* Tilt Renewables CEO Anthony Fowler and Minister for Energy Penny Sharpe officially opening Rye Park Wind Farm earlier this year.



*See above* Local RFS personnel on site to discuss bushfire preparedness and visit a turbine up close.

## Rural Fire Service Site Visit

At Tilt Renewables, keeping our community safe is a top priority. In September, Tilt and Vestas welcomed local RFS personnel to Rye Park Wind Farm for a hands on session focused on emergency response and fire preparedness.

The gathering brought together brigade members, asset managers, and technicians, leading to valuable discussions about communication protocols, fire response scenarios, remote monitoring technology, and safety measures during aerial firefighting. We also shared important lessons learned to build on our collective knowledge.

Sessions like these are especially valuable as we approach the fire season, helping everyone stay prepared and connected, supporting the safety and wellbeing of the whole community.

## Tilting towards the future.

*We are invested in making that happen - for our investors, communities and everyone who works with us.*

*Like our values say: we are people powered; we get things done; and, above all, we lead. Join us as we drive the transition to renewables.*



## Questions?

If you have any questions or enquiries regarding Rye Park Wind Farm, call the number below to speak to a member of the team.

Phone: 1800 WE TILT (938 458)

Email: [RyeParkWindFarm@tiltrenewables.com](mailto:RyeParkWindFarm@tiltrenewables.com) | Web: [www.tiltrenewables.com](http://www.tiltrenewables.com)

Postal Address: PO Box 16080 Collins St West, Melbourne VIC 8007